

KEW Windows for KEW6305

Installation Manual



This manual contains instructions how to install the software “KEW Windows for KEW6305” supplied with KEW6305.

1. Introduction

● Interface

This instrument is equipped with USB and Bluetooth interfaces.
Communication method : USB Ver2.0
Bluetooth : Bluetooth Ver2.1+EDR (Class2)
Compliant profile: SPP
Following can be done by USB/ Bluetooth communication.
* Downloading files in the internal memory of the instrument to a PC
* Making settings for the instrument via a PC
* Displaying the measured results on a PC as graphs in real-time, and also saving the measured data at the same time

● System Requirements

- OS(Operation System)
Windows7/Vista/XP (CPU: Pentium 4 1.6GHz or more)
- Memory
512Mbyte or more (for Windows XP), 1Gbyte or more (for Windows 7/ Vista)
- Display
1024 × 768 dots, 65536 colors or more
- HDD (Hard-disk space required)
1Gbyte or more (including Framework)
- .NET Framework (3.5 or more)

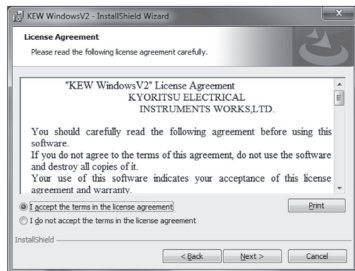
● Trademark

- Windows® is a registered trademark of Microsoft in the United States.
- Pentium is a registered trademark of Intel in the United States.
- Bluetooth is a registered trademark of Bluetooth SIG.

The latest software is available for download from our homepage.
<http://www.kew-ltd.co.jp>

2. Installing the “KEW Windows for KEW6305”

- Followings shall be checked before installing the software.
 - To prepare your system to install this software, please close all open programs.
 - Be sure NOT to connect the instrument with a USB until installation completes.
 - Installation shall be done with Administrative right.
- Insert the CD-ROM in your PC's CD-ROM Drive. Click the “Run KEWSetupLauncher2.exe” when the “AutoPlay” pop-up window appears on Windows Vista or Windows 7. If the installer doesn't run automatically, double click the “KEWLauncher2.exe” in the CD icon. If the User Account Control dialogue box appears, click “Yes (A)” or “Yes (Y)”.
- Read through and understand the License Agreement and click I accept...”, and then click “Next”.



- Click “Next” after entering the user information and other supplementary information.
- Confirm the information on installation, and then click “Install” to start an installation.
If a message requiring restarting your computer is displayed, click “Yes” and restart your computer. Installation process will then restart.
Restarting your computer is essential to install the application properly.

- Click “Finish” when “InstallShield Wizard Complete” dialogue box appears.



- When above installation wizard completes, subsequent installation initiates automatically. If you rebooted your PC at step (5), double click CD drive at My computer to show the following window.



- Repeat above step (3) through (6) and completes the installation.

How to un-install the PC Software:

Access to the “ Control Panel” in the Start Menu at the lower left on the Windows screen, and double click on the “Add/ Remove Programs” to remove the “**KEW WindowsV2**” and “**KEW Windows for KEW6305**”.

3. Installing the USB driver

How to install the USB driver (for Windows 7/ Vista)

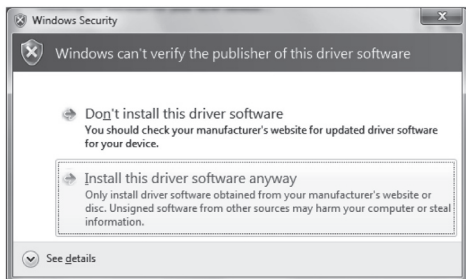
- When the KEW Windows for KEW6305 has been successfully installed in your computer, following dialogue box appears to start installing the USB driver. Click “Next”.



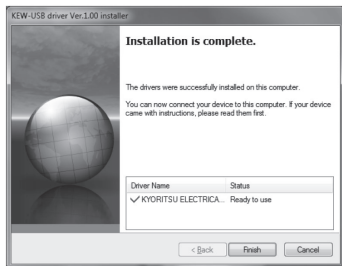
- Read through and understand the End User License Agreement and click “I accept...”, and then click “Next”.



- If the Security Warning message appears, click on the “Install this driver anyway”. (It is no problem to continue installing because operation has already been verified.)



- Installation completes when the following window appears. Click “Finish”.



The USB driver been successfully installed. Power on KEW6305 first, and then connect to you PC.

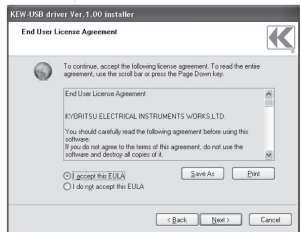
To restart the interrupted USB driver installation process, right click on the CD drive and click “Open”. Click and start “kewusb100_setup.exe” in the “DRIVER” folder.

How to install the USB driver (for Windows XP)

- When the KEW Windows for KEW6305 has been successfully installed in your computer, following dialogue box appears to start installing the USB driver. Click “Next”.



- Read through and understand the End User License Agreement and click “ I accept...”, and then click “Next”.



- If the Warning message appears, click “Continue Anyway”. (It is no problem to continue installing because operation has already been verified.)



- Click “Finish” when an “Installation complete” window appears.
- The USB driver has been successfully installed. Power on KEW6305 first, and then connect to you PC. The “Found New Hardware Wizard” appears. Click “No, not this time.” and then “Next”.
- On the following window, select “Install the software automatically. (Recommended)” and click “Next”.



- If the Warning message appears, click “Continue Anyway”. (It is no problem to continue installing because operation has already been verified.)



- When the installation completes, the Completing the Found New Hardware Wizard screen appears. Click “Finish”.

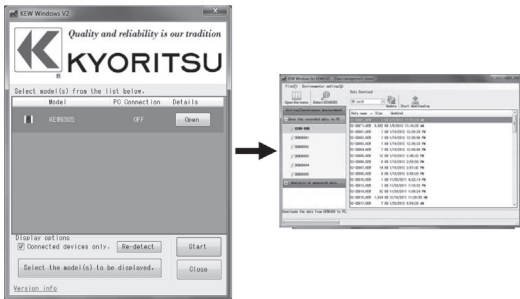
To restart the interrupted USB driver installation process, right click on the CD drive and click “Open”. Click and start “kewusb100_setup.exe” in the “DRIVER” folder.

4. Starting the “KEW Windows for KEW6305”

Click the “**KEW WindowsV2**” icon on your desktop, or click “**Start**” -> “**Program**” -> “**KEW**” -> “**KEW WindowsV2**”.

Ensure that KEW6305 gets started before connecting KEW6305 to your PC. Then start KEW WindowsV2.

The main window for “KEW WindowsV2” appears. Select “KEW6305” and click “Start” or double click on the “KEW6305” to get the KEW6305 started. Click “Close” or close button (x) on the right-top to end the program.



For further instructions, please read the instruction manual. Click (Double click) the desktop shortcut to “KEW Windows for KEW6305 MANUAL”.